

Level 1 Caring for Children Diploma Lead Job Description & Person Specification

November 2023

Job Details

Level 1 Caring for Children Diploma Lead

Location: Reach Academy Feltham, TW13 4AB

Salary: EY Associate @ Band A £27,426 FTE

Contract: 0.2 = 1 day a week (4 hours teaching each week, plus 4 hours flexible working)

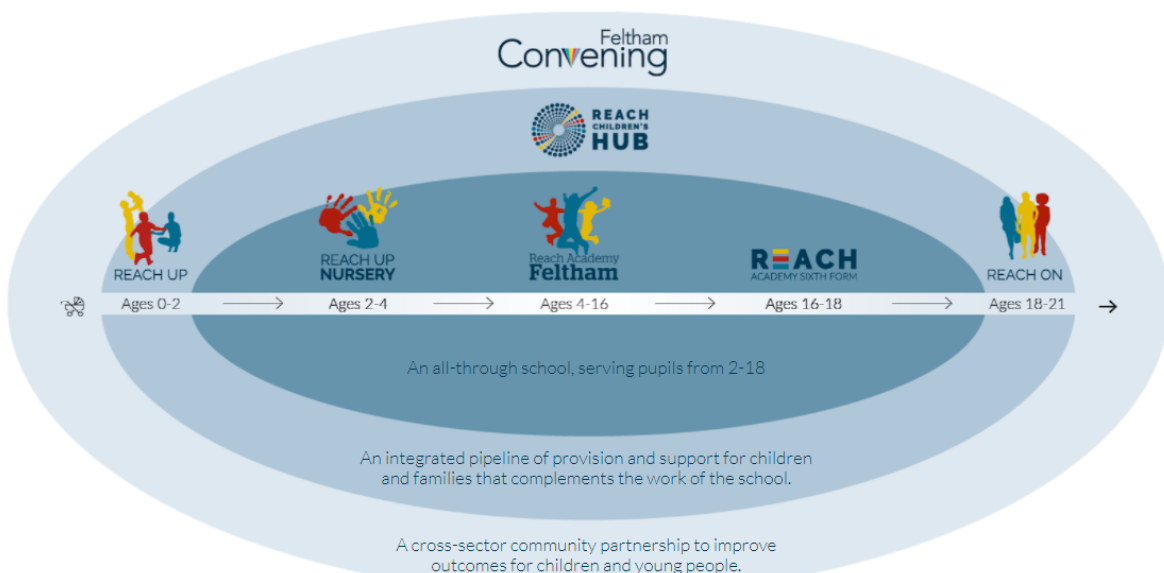
Position reports to: Early Education Lead

Start Date: ASAP

Introduction to the Reach Foundation

The Reach Foundation is a charitable organisation providing cradle-to-career support to families in order to ensure every child can enjoy a life of choice and opportunity. The Foundation's activities consist of:

- [Reach Academy Feltham](#), an Outstanding all-through school educating 900 pupils aged 2-18
- The [Reach Children's Hub](#), providing cradle-to-career support and services to parents and their children (aged 0-21+)
- The [Feltham Convening Partnership](#), a collective impact initiative to improve outcomes for children and young people (CYP) across the community
- [Reach Training](#), a series of networks, opportunities and resources to share our learning more widely across the UK.



We believe that every child should be able to live a life of choice and opportunity

The core outcomes we aim to achieve for children and young people:

(based on international research evidence, our local community consultation, and discussion with academic and profession experts from Education, Educational Psychology, Health, Early Years and Social Sciences)



Be safe and well supported

Children and young people are free from harm and know how to keep themselves safe.

They are well-supported at home.



Be healthy

Children and young people are physically, socially and emotionally healthy.



Achieve well academically

Children and young people achieve good academic results and leave school prepared for the next stage.

Families are actively involved in their education.



Build strong relationships and social networks

Children and young people have strong peer and familial relationships and engage positively with their local community.

Position summary

We are seeking to recruit an experienced practitioner with expertise in Early Years Education and Care, who shares our passion for developing practice across the sector, locally in Feltham, through our Feltham Early Years Development Pipeline. We need someone to:

- Lead the teaching of City and Guilds' **Level 1 Caring for Children Diploma**: a 1-year, part time course. This qualification provides an introduction to caring for children and helps develop the skills and knowledge learners need to care for children. Learners are introduced to a wide range of topics including communicating with children, engaging children through activities, supporting learning and planning for the care of children's physical and emotional needs.
- This role includes, teaching of the diploma on a Thursday from 9am-1pm, term time only. Plus, 4 hours of preparation time. This time can be taken independently, apart from a weekly meeting with the Early Years workforce development team.

Following on from the successful work to build up the Early Years Network and the Early Years Foundation degree provision in Feltham, this is an exciting opportunity to build capacity in the team, so that we can continue to develop the Feltham Early Years Development Pipeline.

Outcomes

- Teach and support students to successfully complete the Level 1 Caring for Children Diploma.
- Work in partnership with City and Guilds to deliver the course in-line with their requirements.
- Fulfil your role in-line with the vision, values and principles of the Foundation in order to ensure children and young people can enjoy lives of choice and opportunity.

Responsibilities

The responsibilities outlined below are not exclusive and are intended to give examples of the expected areas of work for the Tutor:

- Lead the teaching of the diploma on a Thursday from 9am-1pm at the Reach Foundation offices, term time only.
- Work in accordance with the Reach Foundation and Kingston University Equal Opportunities Policies.
- Work closely and in partnership with our Associate Degree Tutor and current Level 2 tutor, to ensure that the delivery of the diploma is of a high standard.
- Be responsible for the preparation of resources for each teaching session.
- Be a supportive tutor, encouraging learners and seeking support from the wider team if needed.
- Support with recruitment to the course.
- Using our online system Laser Learning to communicate with learners and set work.
- Work closely and in partnership with our Assessor to assess students' portfolios, with the opportunity to complete an Assessor Course during the year.
- Adapt planning and unit delivery according to the needs of the current cohort.

Person specification

Qualifications & experience:

Essential criteria

- A relevant early years qualification, minimum Level 3.
- Up-to-date knowledge of current developments in the field of early years in the UK and more widely.
- Experience of working within an early years setting.

Desirable criteria

- Experience of working in partnership with parents.
- Experience of teaching or leading training for adults.

Skills & experience:

Essential criteria

- Strong communication skills.
- Strong IT skills. For example, confidence using Zoom and accessing lessons via Google Drive.
- A strong understanding of the importance of high quality early education and care, being an advocate for the sector.
- Ability to work with and contribute to teams within the Reach Foundation and City and Guilds.
- Ability to convey ideas to students from a wide range of backgrounds and with very diverse experiences.

- Ability to offer support to students from a wide range of backgrounds, many needing academic support.
- Ability to seek support from the wider team and ask for help, if and when required.
- Commitment to and understanding of equal opportunities issues within a diverse and multicultural environment.

Desirable criteria

- Experience of teaching adults
- Knowledge of a wide range of services, research, and individuals within the world of early years education in England.

Apply now

Please complete an online [application form](#). Prospective applicants are encouraged to contact Katherine if you have any questions: katherine.richards-bryant@reachfoundation.org.uk

More information on the Reach Foundation can be found on our [website](#).